

PRO RE NATA

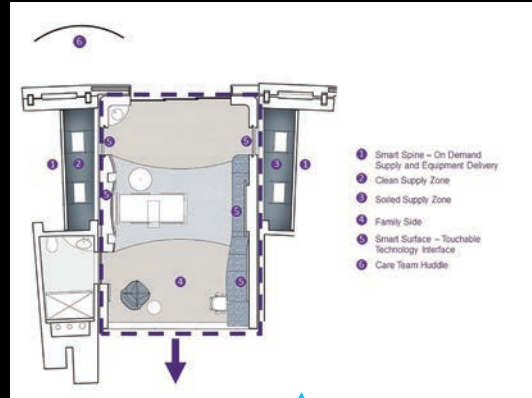
SUBMITTED BY:
GRESHAM SMITH

DESIGN TEAM:

Bob Berry, AIA, EDAC, principal; **Jim Kolb**, AIA, LEED AP, principal and healthcare designer; **Christina Wilson**, AIA, EDAC, LEED AP, healthcare project architect; **Jude Wessels**, EDAC, Sr. healthcare designer and planner; **Linæa Floden**, AIA LEED AP BD+ C, healthcare project architect; **Daniel Becker**, Associate AIA, healthcare project coordination; **Alex Buehning**, AIA, healthcare project architect; **Lilian Boutros**, Associate AIA, healthcare project coordinator; **Tom Christian**, AIA, healthcare project architect; **.....**, AIA, aviation project architect; **Kaitlin Lloyd**, summer intern, Master of Architecture student (University of Florida)

THE CONCEPT:

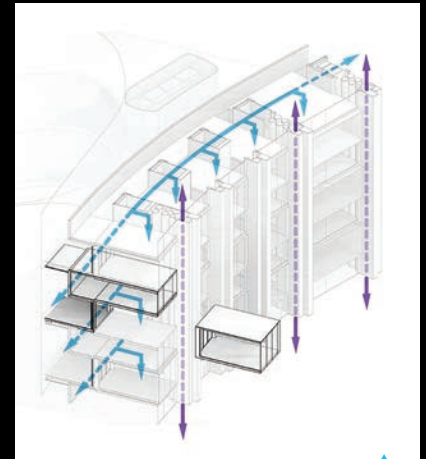
An intelligent, adaptive and responsive acute care environment is enabled by a Smart Spine and Universal Care Modules (UCM). The spine acts as the hospital's brain and backbone to transport information, supplies, equipment, medication and nourishment to caregivers as needed. UCMs, patient rooms of the future, are connected to the Smart Spine and continuously monitor patients and alert caregivers. Because UCMs are portable and adaptable, hospital configuration can easily flex based on bed demand. An Integrated Distribution Center, a fully automated, robotic supply chain, delivers to and collects from the Smart Spine while Smart Spine Plenums serve as shared spaces to house specialty diagnostic equipment. Overall, this system reduces built area and footsteps for staff, brings care providers closer to patients, reduces redundant inventory and simplifies supply stream management to create a fivefold efficiency.



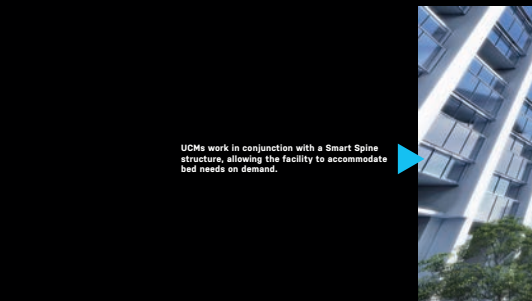
Specialized technology enables seamless access to supplies and monitors patients in a self-cleaning environment.



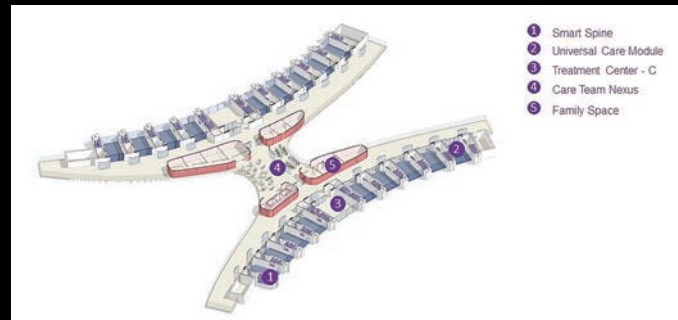
Imagine a hospital intelligently evolving for optimal efficiency, accommodating the changing needs of the community.



A Smart Spine serves as brain and backbone for an adaptable environment and fully automated supply chain.



UCMs work in conjunction with a Smart Spine structure, allowing the facility to accommodate bed needs on demand.



Collaboration and seamless access to patient information, tools and supplies provide an optimum healing environment.