

# SCHOOLS + HEALTH

SUBMITTED BY:

**HDR**

**SAN FRANCISCO**

DESIGN TEAM:

**Jill Bergman** AIA, ACHA, EDAC, LEED AP, Healthcare Principal; **Alejandro Iriarte**, Senior Healthcare Planner; **Cindy Rohrer**, AIA, EDAC, LEED AP, Architect, Junior Medical Planner; **Erin Patterson**, NCIDQ, WELL AP, EDAC, Senior Interior Designer; **Leah Bauer**, IIDA, ASID, IFMA Interior Design Practice Leader

### THE CONCEPT:

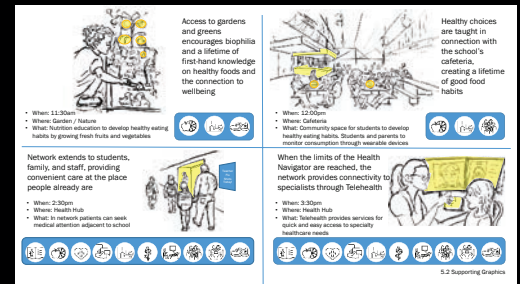
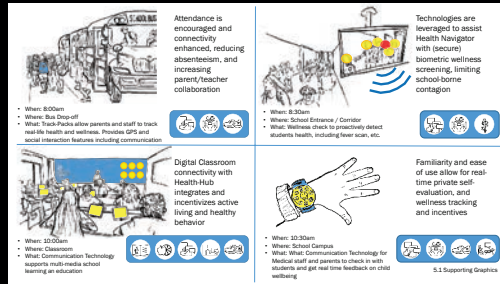
Schools + Health: Elementary School-Based Health Network incorporating *Whole School, Whole Community, Whole Child* Concepts.

*"Schools play a critical role in promoting the health and safety of young people and helping them establish lifelong healthy behavior patterns."* – WSCC

Primary care and wellness services are currently composed of many individual components with little integration. Schools + Health imagines a future with a fully connected healthcare network that integrates health, wellness, community, education, and primary care into one all-inclusive *school-based health network*.

This school-based network will support the concepts of *Whole School, Whole Community, Whole Child* as developed by CDC and ACSD.

Schools + Health proposes one network that serves the community of students, families, teachers and staff of an elementary school. The Health Hub is at the core of this school-based health network and provides physical spaces that link the school and the community, both physically and digitally, to support health, well-being, and primary care services.



### SCHOOL + HEALTH: Design Elements

