

### ReThinking Rural Prenatal Care:



**EDUCATE,  
EQUIP,  
EMBRACE**

SUBMITTED BY:

### LITTLE DIVERSIFIED ARCHITECTURAL CONSULTING

**DESIGN TEAM:**

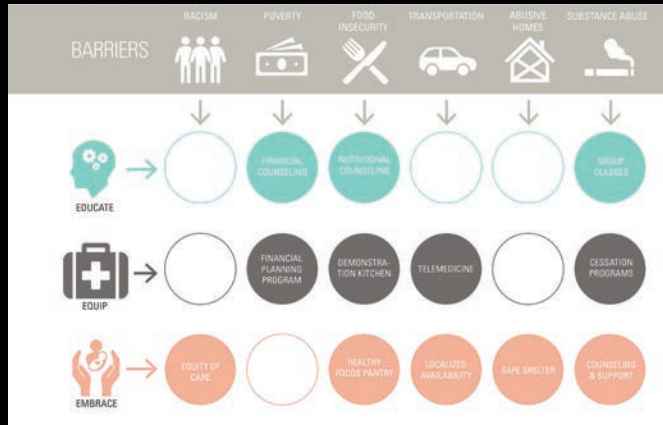
**Roger Wilkerson**, Practice Group Leader for Healthcare; **Georgia Cameron**, AIA, ACHA, Studio Principal for Healthcare; **Ron Boozer**, AIA, LEED AP, Design Principal for Healthcare; **Irina Mitina**, AIA, LEED AP BD+C, WELL AP, Architect; **Nicole Peterson**, CLSSBB, Designer & Lean Specialist; **Sarah Wilson**, Designer & Research Specialist

**THE CONCEPT:**

Death rates for mothers and infants in rural settings are disturbingly high and startlingly disproportionate, largely due to prevalence of serious underlying health concerns prior to pregnancy. This prototype represents a rethink of prenatal care in rural America, in response to this alarming trend. This design is an expression of an interdisciplinary, proactive and aspirational approach to prenatal care, beginning at least one year before pregnancy. We propose a mind/body/spirit approach which EDUCATES, EQUIPS and EMBRACES mothers in a functional medicine care setting that supports and engenders behavioral change. Our goal is to reduce the rates of infant and maternal mortality in rural America, by presenting a systematic approach to clinical and familial behavior change within rural communities leading to an improved baseline health for each subsequent generation.



Interplay of indoor and sheltered outdoor space and familiar materials creates a welcoming, aspirational design.

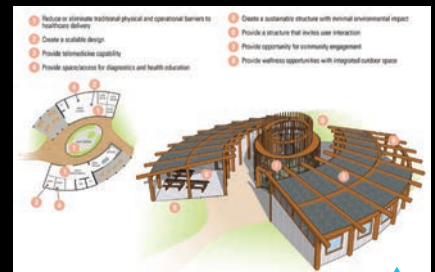


The Barriers-Solutions Matrix identifies focused, integrated solutions that break down traditional barriers to behavioral change.

Spatial variety via moveable panels creates flexibility of daily programs for mothers and families.



A modern barn-raising: built by the community, for the community, establishing personal ownership and investment.



The Barriers-Solutions Matrix-generated guiding principles, which in turn generated our wellness center's design.

