

### THE UBULANCE, THE ED, AND DISASTER EVENTS

SUBMITTED BY:

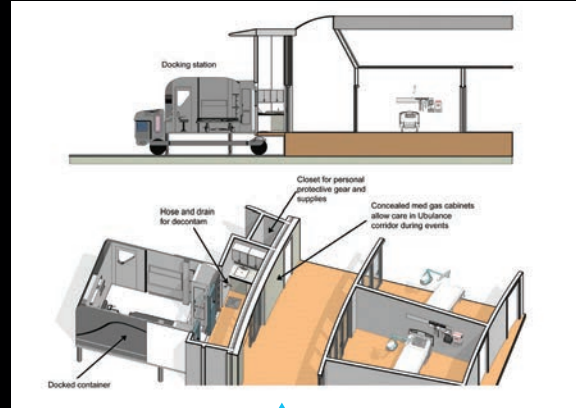
**THE UNIVERSITY OF KANSAS INSTITUTE FOR HEALTH AND WELLNESS DESIGN**

DESIGN TEAM:

**Frank Zilm**, DArch, FAIA, FACHA Emeritus, Chester Dean Director (The University of Kansas Institute for Health and Wellness Design); **Zachary Overschmidt**, EDAC (HKS Inc.); **Bhaswati Mukherjee**, (Hoefler Wysocki)

#### THE CONCEPT:

The design bridges the traditional gap between emergency care prior to arrival and care within the ED. The concept incorporates custom designed transportation compartments that attach to a vehicle for transport to the ED, and in select situations, to provide care in the department. The vehicle would be semi-autonomous, allowing minimal staffing for low-acuity patient transport from home. At the ED site, receiving docks along the exterior are designed to "plug-in" the compartment to the ED, allowing the vehicle to separate for other missions. The compartment would expand, allowing it to function as an exam room. The staging area outside the unit would include sinks, supplies and soiled holding. Patients could be moved into this area for decontamination. Glass doors are located along the perimeter of the ED, which can be activated during a surge event to allow docking of additional containers in the results waiting and other spaces.



Detail section and perspective of container docking area.

Aerial perspective of ED and vehicles docking at receiving stations.

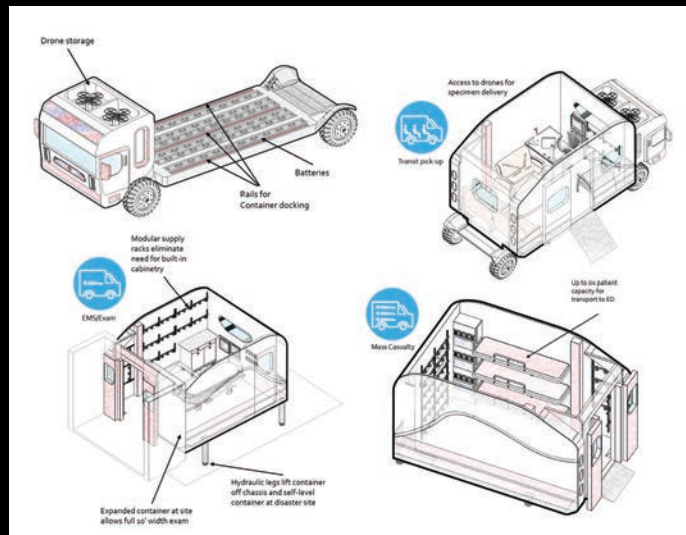
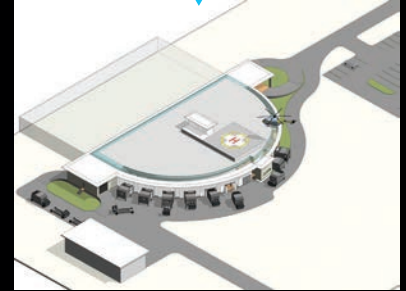
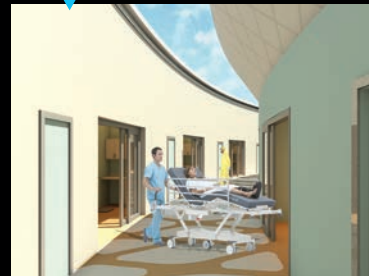


Illustration of "ubulance" chassis and three prototype detachable containers.

View along "ubulance" corridor showing patient movement from vehicle docking area to an ED exam room. Small closets at vehicle entry house personal protective gowns and supplies.



Prototype ED showing docking area for "ubulance" and additional surge receiving areas.

